

# The Heartbeat

Volume 1, Issue 6

February 2008

12005 CR 59, Pearland, Texas 77584

713-436-5080 / [www.shepherdoftheheart.org](http://www.shepherdoftheheart.org)



## Life Groups!

If you haven't signed up for a Life Group yet...check out the tables in the Courtyard. There are a couple of new Life Groups this Spring. If you have an idea about starting a Life Group...please contact Wayne in the church office at 713-436-5080 or by email:

[pastor@shepherdoftheheart.org](mailto:pastor@shepherdoftheheart.org)

Sign up dates: Feb 3rd & Feb 10th

(You can find the Life Group Descriptions on page 4)

Ash Wednesday marks the beginning of the Lenten season (the 40 days prior to Easter not including Sundays). This is a special time of reflection, contemplation and preparation as we remember Christ's sacrifice on the cross and His ultimate victory on Easter morning. Join us at

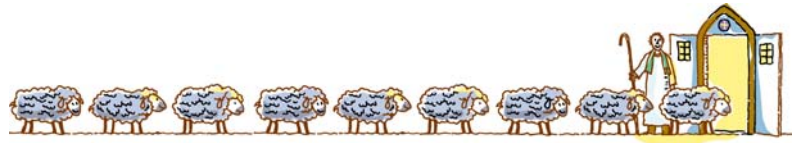
7pm - Wednesday, February 6th



The period called Lent starts on Ash Wednesday, February 6<sup>th</sup>. One of the things Lent challenges us to do is to give something up or to take on something until Easter. The goal of this is that every time you think of what you have given up, you will think of Christ giving up His life for you. If you take something on, then you will think of Christ taking your sins upon Himself. My invite to you this Lent is for you to take the Dollar equivalent of whatever you give up and put it towards my Nothing But Nets bicycle ride from Houston to Fort Worth. If you take something on, why not take on supporting this international outreach to children? This ride (see [www.nothingbutsweat.com](http://www.nothingbutsweat.com)) is to raise money to buy nets to defeat Malaria, a disease that kills thousands of children a year.

See [www.nothingbutnets.net](http://www.nothingbutnets.net) for further information.

# Can't Thank God Enough



Hello Church Family and Friends! My recent travel to South Africa has gotten me more fired up about God than I can explain. I had the opportunity to witness more people living in poverty than ever before, however I also saw the disparity between those who have and the poor. For a Christian, it is devastating to me. How can God permit this to occur? Good question, however I don't have the answer. Perhaps it is that God gives us free will and it through our choices entirely the situation like this happens. What I do know is that God is giving the people who are called by His name an opportunity to turn things around. When no action is taken to rectify the conditions, God has the opportunity to know who the real Christians are. God also, has a plan because the Scriptures say in Jeremiah 29:11b that God has thoughts of peace and not of evil; to give us a future and a hope. The plan just hasn't been revealed yet.

The Word of God says in II Chronicles 7:14 "if my people who are called by my name will humble themselves, and pray and seek My (God's) face, and turn from their wicked ways, then I (God) will hear from heaven, and will forgive their sin and heal their land". South Africa, as well as America has to become more humble. We all have evil ways that we camouflage quite well, however many South Africans worship other gods. For those of us who intercede for others when we pray then here is a challenge for you. Please pray for South Africa continuously. There is corruption in government, globalized capitalism, fraudulent land ownership, and an unequalized distribution of wealth. There is an epidemic of HIV/AIDS, tuberculosis and malaria. There is illiteracy and a high rate of unemployment.

There are some positive actions, too. Apartheid has been abolished. There are many churches and civic organizations helping children with aids and trying to educate people about prevention and living with HIV/AIDS; organizations working to stop the deaths from malaria and trying to vaccinate as many people as possible for tuberculosis, however more must be done. The aforementioned situations are widespread. More than you can imagine. God's plan takes action when we pray and support those less fortunate. I wish we could change this detriment just by praying, but it is going to take the efforts of many to help this country turn things around. There's too much to discuss in this short article, so I ask that those who will, please pray and let the Holy Spirit lead your actions.

There is one more thing, *SOTH* are you ready to reach out to those less fortunate in our community? Are you up for the challenge?

Peace and Happiness,

Hazel

**HAZEL WILL BE SHARING MORE ABOUT HER  
TRIP TO SOUTH AFRICA ON FEBRUARY 24TH  
AFTER WORSHIP.**

**MARK YOUR CALENDARS!**



YOU CAN PLACE YOUR DONATIONS IN THE BOXES IN THE "COURTYARD".

WE WILL BE COLLECTING ITEMS THROUGH **FEBRUARY 3RD**

IF YOU HAVE QUESTIONS PLEASE CONTACT CARLA GAINES OR ELIZABETH BEHRENS

MOST NEEDED ITEMS

- |                      |                  |
|----------------------|------------------|
| CANNED VEGETABLES    | DRIED FRUIT      |
| JAMS/JELLIES         | CONDIMENTS       |
| OATMEAL              | BAGGED BEANS     |
| CANNED MEAT/SEAFOOD  | BAGGED DRY RICE  |
| DRY PASTA            | TOASTER PASTRIES |
| CANNED FRUIT         | PANCAKE MIX      |
| PEANUT BUTTER        | CANNED NUTS      |
| PASTA SAUCE          | CANNED/DRY SOUP  |
| CANNED/BOTTLED JUICE | BOX DINNERS      |
| DEHYDRATED POTATOES  | CANNED TOMATOES  |

**KITCHEN LOVE GROUP**

**SATURDAY, FEB 16TH 2008**

**SHEPHERD OF THE HEART KITCHEN**

**9 - 11:30AM**

**COME JOIN THE FUN!**



First Baptist Church—Fresno is hosting a **City Wide Crusade - "Breaking the Chains"**

**When: February 11th - 15th.**

Starting 6:30pm each evening with music!

**Where: 4501 FM 521 Rd. Fresno, TX**  
(Maps are on front table.)

The Methodist Church will be represented on **Monday, Feb 11th** by Wayne Calder and Chris Crump.

Come worship and hear awesome messages & music all week!

**MEMBER CARE – IF YOU'D LIKE TO PHONE SOMEONE WHEN THEY'RE ILL, HELP ARRANGE MEALS OR CARDS FOR SOMEONE WHILE THEY'RE SICK OR POSTPARTUM, OR JOIN IN THE FUN OR SADNESS OF ORGANIZING WEDDINGS OR FUNERALS FOR OUR CHURCH FAMILY MEMBERS – PERHAPS THE MEMBER CARE COMMITTEE IS FOR YOU. IF YOU KNOW OF SOMEONE THAT MAY NEED OUR CARE ... PLEASE**



**CONTACT: DENISE NEBGEN JOHNSON**

[DRNEBGEN@COMCAST.NET](mailto:DRNEBGEN@COMCAST.NET)



The next Fun & Games Night is on Friday, February 29th at 7pm.

It will be at The Hanson's Home - 4711 Linden Pl.—Pearland.

Please email Teresa if you plan to come [tnt25@sbcglobal.net](mailto:tnt25@sbcglobal.net)

**You were S.H.A.P.E.d for ministry**

S.H.A.P.E. is an acronym which stands for:

- Spiritual gifts
- Heart passions
- Abilities
- Personality
- Experiences

These things all come together to shape who you are as a person and how you are "wired" to be part of this life and the community of believers where you fellowship.

Please go the church website: [www.shepherdoftheheart.org](http://www.shepherdoftheheart.org)

And click on the education link to download the worksheets and info.

We will have the SHAPE class on **Sunday, February 17th**

Questions: Contact Zack Bell and Steven Sartain

# Life Groups

## JOURNEY THROUGH THE BIBLE

**Facilitator:** Jason Johnson

713-436-2815

[Jason\\_ej@comcast.net](mailto:Jason_ej@comcast.net)

As the name implies, this is a Bible study group that journeys through the Bible. This session we are studying the books of 1 & 2 Corinthians using the study guide: *Finding Your Unique Place in God's Plan*. This group is a great choice for anyone interested in learning more about the Bible. This group is very diverse and everyone is welcome. Childcare is provided. The group goes to lunch together about every 6 weeks.

**Where:** Church Classroom

**When:** 1st, 3rd and 5th Sundays @ 9:45am (Alternating with KidStuf)

## MONDAY NIGHT FELLOWSHIP

**Facilitator:** Diane Drietizer

281-489-7681

[Dbell7681@esagelink.com](mailto:Dbell7681@esagelink.com)

Join us for friendly, open discussions revolving around guided studies on living as a Christian in today's world. We've been using the Andy Stanly studies on DVD with life application discussions. We end each study series with group pot luck social.

**Where:** Joe and Karen Brewton's home

281-692-9033 for directions

**When:** 2<sup>nd</sup> & 4<sup>th</sup> Mondays at 7pm

## WOMEN'S MID-WEEK BIBLE STUDY GROUP

**Facilitator:** Elizabeth Behrens

713-436-0059

[ejebhrens@earthlink.net](mailto:ejebhrens@earthlink.net)

Come join us for bible study, support and friendship.

**Where:** Church classroom

**When:** Wednesdays at 10am

## KITCHEN LOVE GROUP

**Facilitator:** Karen Brewton

281-692-9033

[kebrewton@comcast.net](mailto:kebrewton@comcast.net)

Do you like the warm, friendly aroma of baking goodies? Do you enjoy laughing and sharing stories as these wonderful smells are created? Join us to make and store sweet and savory treats for Sunday mornings. Nothing says loving like something from the kitchen!!

**Where:** Church kitchen

**When:** 1 Saturday a month / 9am-11:30am

## MEN'S MORNING COFFEE

**Facilitator:** Wayne Calder

281-489-8842

[pastor@shepherdoftheheart.org](mailto:pastor@shepherdoftheheart.org)

We are a group of guys that meet at 7am, finish at 8am (sharp). We discuss everyday issues that face us in life, looking at dealing with them as Christians and what the Bible says. We are not on a time-table, nor on a topic schedule. No question is too dumb, be it from a skeptical slant or a clarification one. Biblical knowledge is not a prerequisite! All men are welcome.

**Where:** Country Place Golf Course Clubhouse

**When:** 7 am every Friday

## WORLD RELIGION STUDY

**Facilitator:** Wayne Calder

281-489-8842

[pastor@shepherdoftheheart.org](mailto:pastor@shepherdoftheheart.org)

With a Mormon candidate running for the presidency and the confusion about what exactly Muslims believe, we are going to provide an opportunity to learn about different world religions and Christian denominations. This is *NOT* a study on who is going to heaven or hell. It is a study to find out the roots and beliefs of specific religions and how they differ from Christianity as well as how specific denominations differ from Methodism.

**Where:** Church classroom

**When:** Wednesdays at 7pm-8:30pm

## 20's & 30's FELLOWSHIP

**Facilitator:** Tom and LeAnn Jaeger

713-436-5470

[twjaeger@yahoo.com](mailto:twjaeger@yahoo.com)

Come join us to have fun and fellowship together, to care and pray for each other. Our monthly socials include family gatherings as well as men's and women's socials.

**Where:** determined by activity

**When:** Monthly

## FUN AND GAMES GROUP

**Facilitators:** Tim and Teresa Hanson

281-412-5596

[tnt25@sbcglobal.net](mailto:tnt25@sbcglobal.net)

We meet once a month for fun and fellowship. Join us to learn some new games and make some new friends or get to know old friends even better.

**Where:** rotating homes

**When:** Monthly on Fridays @ 7 pm



# Notes from the Gridiron

After being postponed, there was growing excitement for the first ever SOH football bowl (originally called the Christmas Bowl, now clearly needing to be renamed. Mud Bowl? Tidy Bowl? )

The sky was overcast, and an occasional drizzle met us in the parking lot as we warmed up and waited for everyone to arrive. The Marrelli girls played with their remote control cars while the players warmed up with a few passes. Sean punted the ball and nearly took out one of the light fixtures on the front of the church.

We marked off the field and began to pick teams. Steven "High School Glory" Sartain was the captain for the "Light jerseys" and Roland "Hands" Tink headed up the "Dark jerseys". The "girls" were chosen first: Danica "Methuselah" Marrelli for the Lights, Carla "Bruiser" Gaines for the Darks. Rounding out the Darks were Joe "Two Pop" Dreitzler, Sean "Slippery" Marrelli, and Tommy "The Shadow" Belsha. The Lights had an extra member in Caroline "String Bean" Marrelli, and the others were Chris "Steamroller" Gaines, Jeff "Flash", and Tom "Air" Jaeger. Spectators were sparse, including the younger two Marrelli girls, Connor Gaines, and Jenny and Blake Sartain. Baby Kara Sartain was the cheerleader (really – she was wearing her cheerleading outfit!).

The game started with the Lights clearly in control of the game. They were quickly up 2 scores to zip. The first injury came with a collision between "Steamroller's" nose and "Methuselah's" shoulder; "Methuselah" went down, where she enjoyed the chirping of little birdies flying round and round in a little circle after knocking her head on the ground. After the Lights scored an additional TD, an unexpected timeout occurred when a friendly but VERY LARGE black dog wandered back to the field. It took a while to get him to go back to his house, and we all enjoyed a water break.

Just when it was looking really bleak for the Darks, their surprise player, Mike "The Albatross" Grove, showed up to join the team. With his 8-foot wingspan, he was a menace on both defense and offense. Breathing new life into the Darks, they scored quickly and then held the Lights on their next drive. Driving hard for the goal again, the Darks were looking to compete, when "Two Pop" caught a beautiful pass, but went down as he heard Two Pops in his quadriceps. Unsure of the seriousness of the injury, we all crowded around, bringing ice and passing out advice. After a while, "Two Pop" was able to hobble off the field and take a seat in the vacated spectator's chair. I should say that, prior to his demise, "Two Pop" was the single hardest playing athlete on the field, and is responsible for all of the large divots in the field (no, an 18 wheeler did not drive around back there!). We used "Two Pops" recovery time as half time, but the Darks took up right where they left off, scoring on the first play of the second half.

It was back and forth throughout the second half, with awesome double cross and option plays drawn up by "Flash" and "High School Glory". "Air" took over as quarterback for the Lights for a while; with beautiful form, he nevertheless had a hard time connecting. Injuries continued to plague both teams, with a collision between "Slippery" and Shadow (where was the other team in this collision?) and another collision that took "High School Glory" down for a while. "Hands" wanted to rush the passer at every play, but showed great restraint. "The Shadow" rallied the Darks and they came back strong; with a score of 7-6 Lights, "High School Glory" went to "Methuselah" in the end zone. "Methuselah", who had been open all game and begging for the ball, could not produce, as she dropped the perfectly thrown pass and the Darks took over on downs. The Darks came back and tied the game 7-7. Playing to 8, we were in a sudden death situation. Driving down the field, and needing a first down to continue, "Methuselah" called a pass down the middle to "String Bean", who (unlike her mother), hung onto the ball and kept the dream alive. A pass into the end zone into heavy coverage connected to "Steamroller", and the Lights came out victorious.

## INJURY REPORT:

"Two Pop": Torn quadriceps. Injured reserve; out for unspecified period of time

"Methuselah": no longer seeing/hearing birdies; mild groin pull late in game; status: questionable (although consultation with Brian McNamee is encouraging that lidocaine & B12 injections should allow her to return)

"Steamroller": nose a little crooked, but ready to play again

"High School Glory": Mild concussion, or was it just an excuse for an extended breather???

"Slippery": not hurt during the game, but complaining like mad at home!



## Shepherd of the Heart - Calendar of Events - February 2008

### Friday, Feb 1st

Men's Breakfast.....7am

### Sunday, Feb 3rd

Journey/Bible.....9:45am

Worship.....11am

### Tuesday, Feb 5th

Trustees Meeting.....7pm

### Wednesday, Feb 6th

Women's Bible Study.....10am

Ash Wednesday Service.....7pm

### Thursday, Feb 7th

Disciple Class.....6:30pm

### Friday, Feb 8th

Men's Breakfast.....7am

### Saturday, Feb 9th

Leadership Retreat.....9am-2pm

### Sunday, Feb 10th

KidStuf.....9:30am

Worship.....11am

### Monday, Feb 11th

Monday Night Fellowship.....7pm

Lay Teaching Committee.....7pm

### Tuesday, Feb 12th

SPRC.....7pm

### Wednesday, Feb 13th

Women's Bible Study.....10am

World Religion Study.....7pm

### Thursday, Feb 14th

Disciple Class.....6:30pm

### Friday, Feb 15th

Men's Breakfast.....7am

### Saturday, Feb 16th

Kitchen Love Group.....9am

### Sunday, Feb 17th

SHAPE Class.....9:30am

Journey/Bible.....9:45am

Worship.....11am

### Wednesday, Feb 20th

Women's Bible Study.....10am

World Religion Study.....7pm

### Thursday, Feb 21st

Disciple Class.....6:30pm

### Friday, Feb 22nd

Men's Breakfast.....7am

### Saturday, Feb 23rd

KidStuf practice.....9am

### Sunday, Feb 24th

KidStuf.....9:30am

Worship.....11am

Mission Moment w/Hazel.... after worship

### Monday, Feb 25th

Monday Night Fellowship.....7pm

### Tuesday, Feb 26th

Church Council.....7pm

### Wednesday, Feb 27th

Women's Bible Study.....10am

World Religion Study.....7pm

### Thursday, Feb 28th

Disciple Class.....6:30pm

### Friday, Feb 29th

Men's Breakfast.....7am

Fun & Games (Hanson's).....7pm

Please call or email the church office (713-436-5080) or [adminasst@shepherdoftheheart.org](mailto:adminasst@shepherdoftheheart.org) to have your meetings, classes, practices and events placed on the calendar. Thank you, Christie

Office Hours: Monday - Thursday 8:30 a.m - 2pm



I need pictures, newspaper articles,

dates, any thing you have to do with the life of Shepherd of the Heart for 2007. If you do not want to part with your items, I will be sure to make copies and return their originals. Thanks,

Diane Dreitzler



Please note that the 25th of each month is the deadline for the monthly newsletter.

Please submit info by email for your meetings, events, or announcements.

Thanks, Christie



12005 C.R. 59

Pearland, TX 77584

Church #: 713.436.5080

Fax: 713.436.5053

www.shepherdoftheheart.org



Leadership Retreat

## Saturday, February 9th - Leadership Retreat

No you don't have to dress up like these guys...  
come comfortable!

**Who: Committee/Ministry Leaders of Shepherd of the Heart**

**Time: 9 am - 2 pm (Lunch and childcare will be provided)**

**Where: Here**

You need to bring the following:

- \* Open mind and heart
- \* Fresh Ideas
- \* Bible
- \* Calendar
- \* Learning's from past experience

Senior Pastor - Wayne Calder..... email: pastor@shepherdoftheheart.org

Intern Pastor - Hazel Jackson.....email: HazelJackson@allstate.com

Administrative Assistant - Christie Burnette.....email: adminasst@shepherdoftheheart.org